

# VRSE VALVOLE DI BLOCCO A SEMPLICE EFFETTO

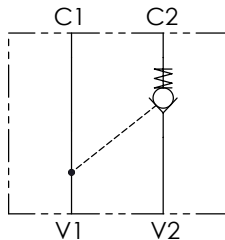
## SINGLE ACTING PILOT CHECK VALVES



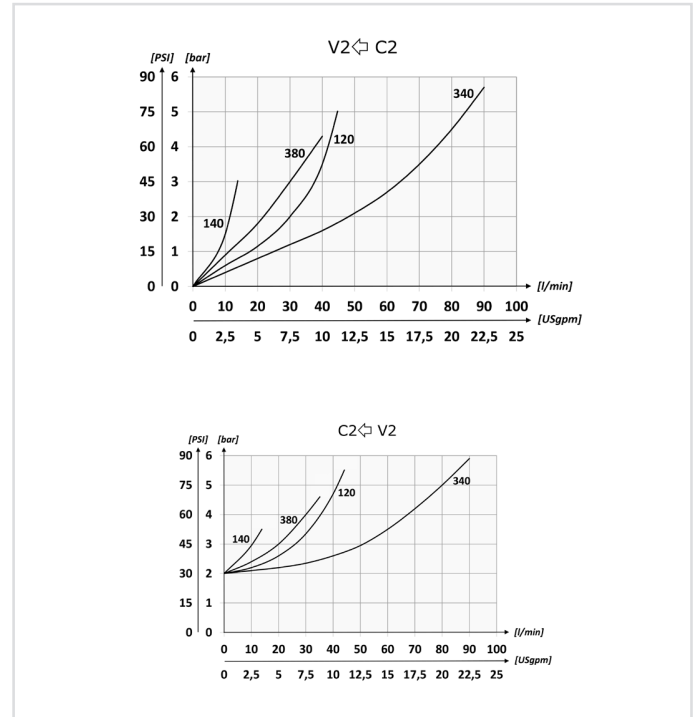
|                           |             |    |
|---------------------------|-------------|----|
| <b>CODICE ORDINAZIONE</b> | 01          | 02 |
| <b>ORDERING CODE</b>      | <b>VRSE</b> |    |

|           |  |             |
|-----------|--|-------------|
| <b>01</b> | VALVOLE DI BLOCCO A SEMPLICE EFFETTO<br>(SINGLE ACTING PILOT CHECK VALVES) | <b>VRSE</b> |
| <b>02</b> | DIMENSIONE<br>(SIZE)   | BSPP 1/4    |
|           |  | BSPP 3/8    |
|           |  | BSPP 1/2    |
|           |  | BSPP 3/4    |

**SCHEMA IDRAULICO / HYDRAULIC CIRCUIT**

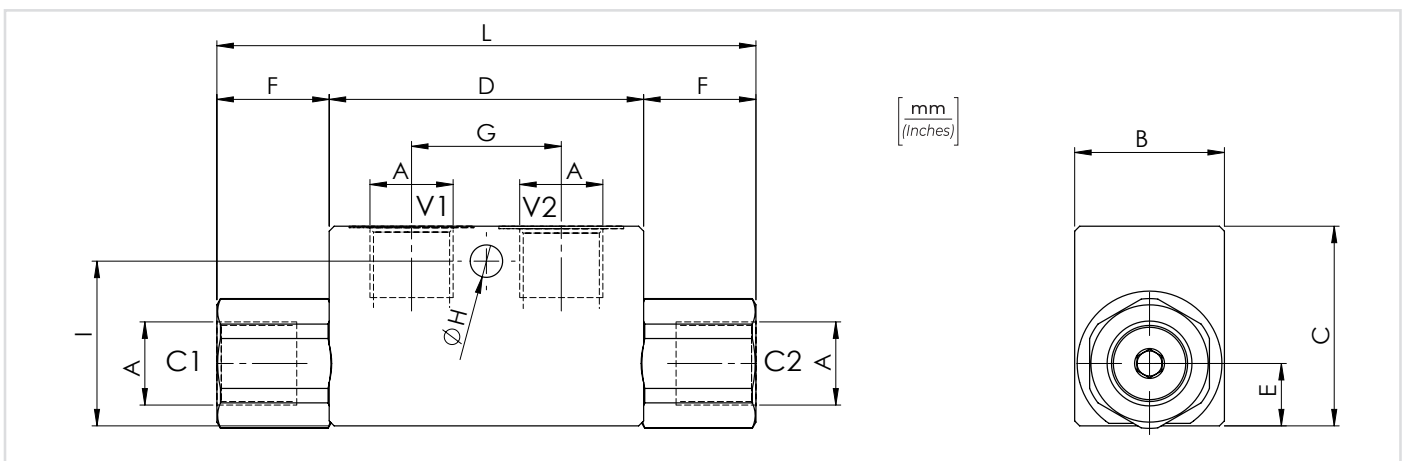


**PERFORMANCES**



**DATI TECNICI / TECHNICAL DATA**

|  |   |
|--|---|
| Olio idraulico - Mineral oil   | ISO 6743/4 (DIN 51524)  |
| Viscosità olio - Oil viscosity   | 15-250 mm <sup>2</sup> /s (15 to 250 cSt)   |
| Classe di contaminazione max<br>Max contamination index  | ISO 4406:1999 Classe 19/17/14   |
| Temperatura dell'olio - Oil temperature  | -20°C +80°C -4°F +176°F   |
| Temperatura ambiente - Environment temperature   | -20°C +50°C -4°F +122°F   |
| È indispensabile l'utilizzo di un filtro per proteggere la valvola (filtrazione consigliata 15 µm)<br>It is necessary a filter use to protect the valve (advised filtration 15 µm) |   |
| Trafilamento massimo<br>Max leakage  | 0,25 cm <sup>3</sup> /min - 5 gocce/min<br>0,015 in <sup>3</sup> /min - 5 drops/min |



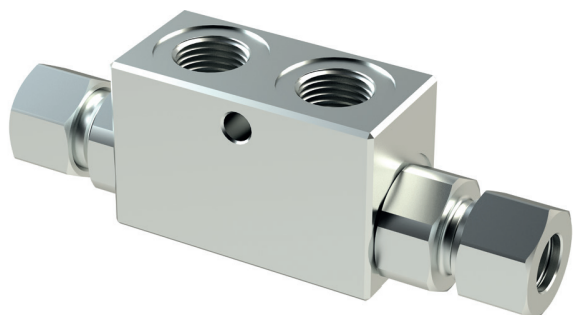
**CARATTERISTICHE TECNICHE / TECHNICAL CHARACTERISTICS**

| TIPO<br>TYPE | A        | PORTATA MAX<br>MAX FLOW<br>l/min-USgpm | PRESSIONE MAX<br>MAX PRESSURE<br>bar-PSI | B         | C         | D         | E           | F           | G         | H          | I         | L          | PESO APPROX<br>APPROX WEIGHT<br>kg-lbt | RAPPORTO<br>DI PILOTAGGIO<br>PILOT RATIO |           |            |             |             |           |            |            |             |
|--------------|----------|--|--|-----------|-----------|-----------|-------------|-------------|-----------|------------|-----------|------------|--|--|-----------|------------|-------------|-------------|-----------|------------|------------|-------------|
| VRSE140      | BSPP 1/4 | 15 (4)                                 | 350<br>(5075)                            | 30 (1.18) | 40 (1.57) | 63 (2.48) | 12,5 (0.49) | 22,5 (0.89) | 30 (1.18) | 6,5 (0.26) | 33 (1.30) | 108 (4.25) | 0,64 (1.41)                            | 1:4                                      |           |            |             |             |           |            |            |             |
| VRSE380      | BSPP 3/8 | 35 (9.2)                               |  |           |           |           |             |             |           |            |           |            | 0,59 (1.30)                            |  |           |            |             |             |           |            |            |             |
| VRSE120      | BSPP 1/2 | 45 (11.9)                              |  |           |           |           |             |             |           |            |           |            | 35 (1.38)                              |  | 50 (1.97) | 82 (3.23)  | 16,5 (0.65) | 31,5 (1.24) | 36 (1.42) | 35 (1.38)  | 145 (5.71) | 1,08 (2.38) |
| VRSE340      | BSPP 3/4 | 70 (18.5)                              |  |           |           |           |             |             |           |            |           |            | 40 (1.57)                              |  | 60 (2.36) | 100 (3.94) | 22,5 (0.89) | 46 (1.81)   | 50 (1.97) | 8,5 (0.33) | 50 (1.97)  | 192 (7.56)  |

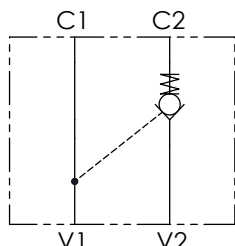
I dati presenti nel catalogo possono essere soggetti a variazioni, pertanto OLEOWEB si riserva il diritto di apporre modifiche in qualunque momento e senza alcun preavviso. OLEOWEB reserves the right to modify the products at any time and without notice: the technical data of the catalogue can consequently change.

Aggiornamento - Update  
21R-2021

**VRSD** VALVOLE DI BLOCCO A SEMPLICE EFFETTO DIN2353  
DIN2353 SINGLE ACTING PILOT CHECK VALVES



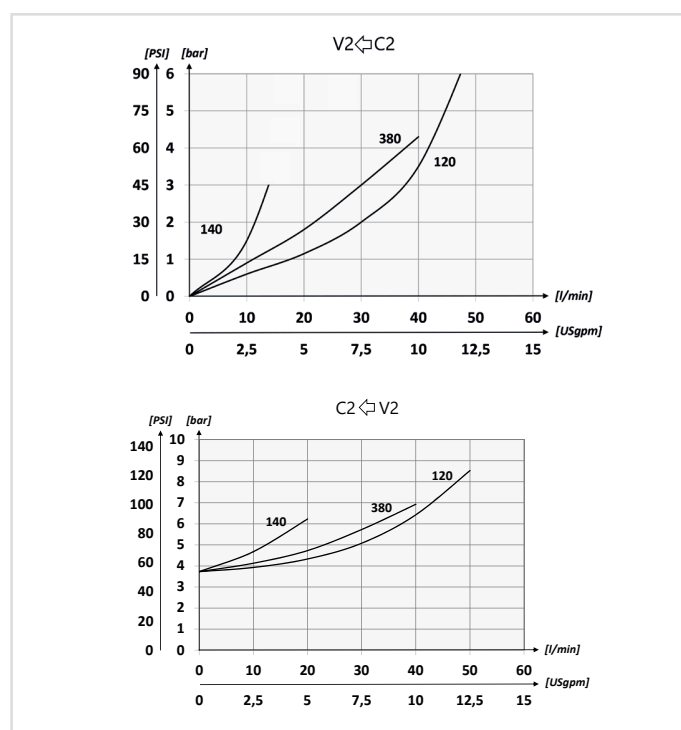
**SCHEMA IDRAULICO / HYDRAULIC CIRCUIT**



|  |             |    |    |
|--|-------------|----|----|
| <b>CODICE ORDINAZIONE</b><br>ORDERING CODE | 01          | 02 | 03 |
|  | <b>VRSD</b> |    |    |

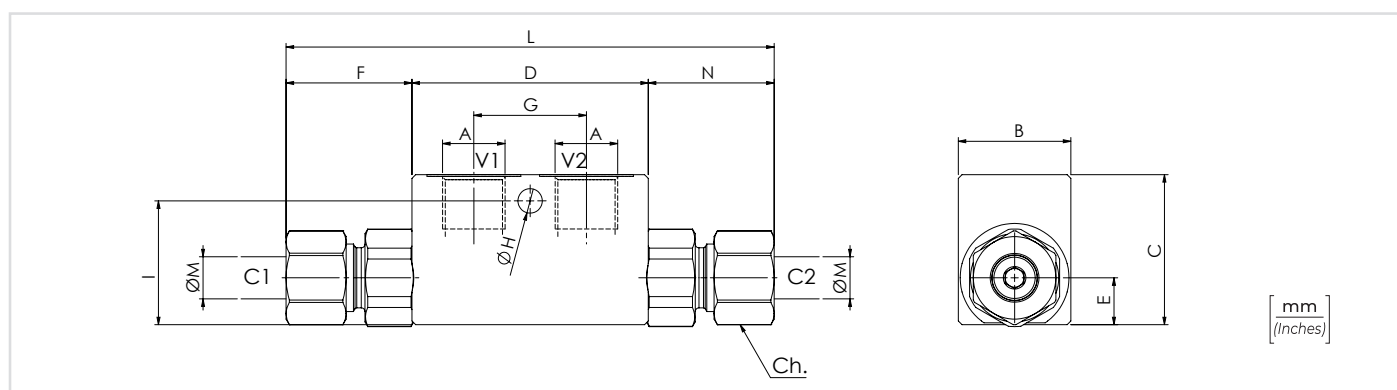
|           |  |   |             |
|-----------|--|---|-------------|
| <b>01</b> | VALVOLE DI BLOCCO A SEMPLICE EFFETTO DIN2353<br>(DIN2353 SINGLE ACTING PILOT CHECK VALVES) |   | <b>VRSD</b> |
| <b>02</b> | DIMENSIONE<br>SIZE   | BSPP 1/4  | <b>140</b>  |
|           |  | BSPP 3/8  | <b>380</b>  |
|           |  | BSPP 1/2  | <b>120</b>  |
| <b>03</b> | DIMENSIONE TUBO<br>SIZE PIPE   | Per tubo Ø 8 - For Ø 8 pipe<br>only for BSPP 1/4                    | <b>T8</b>   |
|           |  | Per tubo Ø 12 - For Ø 12 pipe standard<br>only for BSPP 1/4 and 3/8 |             |
|           |  | Per tubo Ø 15 - For Ø 15 pipe standard<br>only for BSPP 1/2         |             |

**PERFORMANCES**



**DATI TECNICI / TECHNICAL DATA**

|  |   |
|--|---|
| Olio idraulico - Mineral oil   | ISO 6743/4 (DIN 51524)  |
| Viscosità olio - Oil viscosity   | 15-250 mm <sup>2</sup> /s (15 to 250 cSt)   |
| Classe di contaminazione max<br>Max contamination index  | ISO 4406:1999 Classe 19/17/14   |
| Temperatura dell'olio - Oil temperature  | -20°C +80°C -4°F +176°F   |
| Temperatura ambiente - Environment temperature   | -20°C +50°C -4°F +122°F   |
| È indispensabile la presenza di un filtro nel circuito idraulico per proteggere la valvola (filtrazione consigliata 15 µm) |   |
| A filter into the hydraulic circuit necessary to protect the valve (advised filtration 15 µm)                              |   |
| Trafilamento massimo<br>Max leakage  | 0,25 cm <sup>3</sup> /min - 5 gocce/min<br>0,015 in <sup>3</sup> /min - 5 drops/min |



**CARATTERISTICHE TECNICHE / TECHNICAL CHARACTERISTICS**

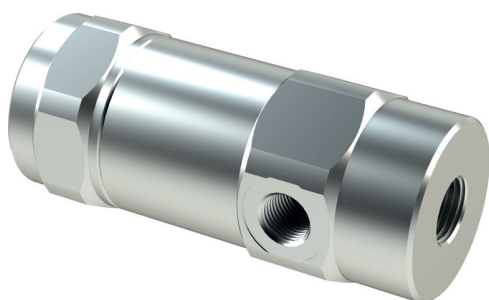
| TIPO<br>TYPE | A        | PORTATA<br>MAX<br>MAX FLOW<br>l/min-USgpm | PRESSIONE MAX<br>MAX PRESSURE<br>bar-PSI | mm - inch |         |           |      |             |              |               |              |            |           | Ch. | PESO APPROX<br>APPROX<br>WEIGHT<br>kg-lbt | RAPPORTO DI<br>PILOTAGGIO<br>PILOT RATIO |
|--------------|----------|---|--|-----------|---------|-----------|------|-------------|--------------|---------------|--------------|------------|-----------|-----|---|--|
|              |          |   |  | B         | C       | D         | E    | F           | G            | H             | I            | L          | M         |     |   |  |
| VRSD140T8    | BSPP 1/4 | 10 (2.6)                                  | 350<br>(5075)                            | 30        | 40      | 63        | 12,5 | 28 (1.10)   | 30<br>(1.18) | 6,5<br>(0.26) | 33<br>(1.30) | 119 (4.69) | 8 (0.31)  | 17  | 0,62 (1.36)                               | 1:9                                      |
| VRSD140      |          | 15 (4)                                    |  | 32 (1.26) | 127 (5) | 12 (0.47) | 22   | 0,63 (1.37) |              |               |              |            |           |     |   |  |
| VRSD380      | BSPP 3/8 | 35 (9.2)                                  |  | 35        | 50      | 82        | 16,5 | 33,5        | 36           |               | 35 (1.38)    | 149 (5.87) | 15 (0.59) | 27  | 1,10 (2.42)                               | 1:4                                      |
| VRSD120      | BSPP 1/2 | 45 (11.9)                                 |  | 35        | 50      | 82        | 16,5 | 33,5        | 36           |               | 35 (1.38)    | 149 (5.87) | 15 (0.59) | 27  | 1,10 (2.42)                               |  |

I dati presenti nel catalogo possono essere soggetti a variazioni, pertanto OLEOWEB si riserva il diritto di apporre modifiche in qualunque momento e senza alcun preavviso. OLEOWEB reserves the right to modify the products at any time and without notice: the technical data of the catalogue can consequently change.

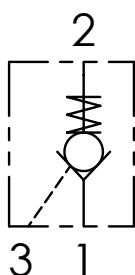
Aggiornamento - Update  
21R-2021

# VRPE VALVOLE DI BLOCCO PILOTATE A SEMPLICE EFFETTO

## SINGLE ACTING PILOT CHECK VALVES



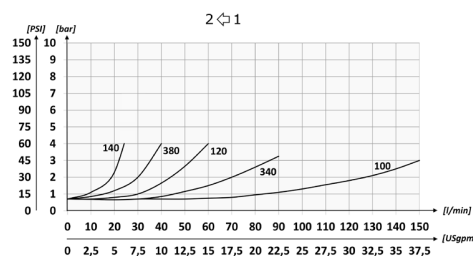
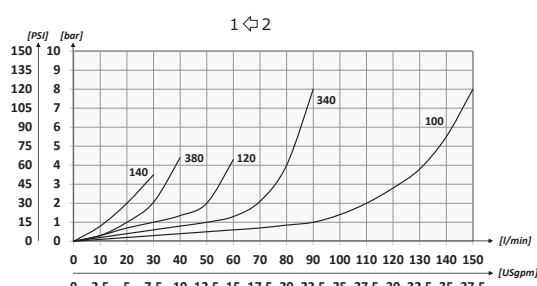
SCHEMA IDRAULICO / HYDRAULIC CIRCUIT



|                           |  |             |    |
|---------------------------|--|-------------|----|
|                           |  | 01          | 02 |
| <b>CODICE ORDINAZIONE</b> |  | <b>VRPE</b> |    |
| <b>ORDERING CODE</b>      |  |             |    |

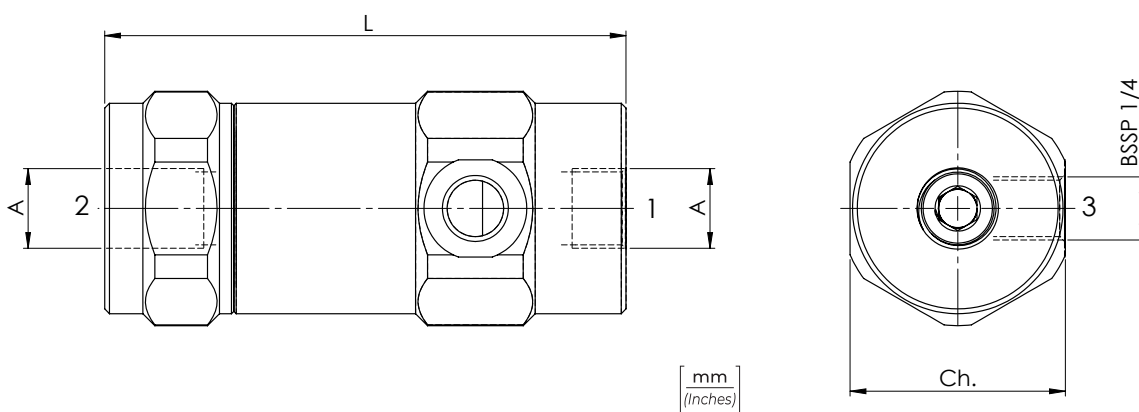
| 01 | VALVOLE DI BLOCCO PILOTATE A SEMPLICE EFFETTO (SINGLE ACTING PILOT CHECK VALVES) | VRPE     |     |
|----|--|----------|-----|
| 02 | DIMENSIONE (SIZE)  | BSPP 1/4 | 140 |
|    |  | BSPP 3/8 | 380 |
|    |  | BSPP 1/2 | 120 |
|    |  | BSPP 3/4 | 340 |
|    |  | BSPP 1   | 100 |

PERFORMANCES



DATI TECNICI / TECHNICAL DATA

|  |   |
|--|---|
| Olio idraulico - Mineral oil   | ISO 6743/4 (DIN 51524)  |
| Viscosità olio - Oil viscosity   | 15-250 mm <sup>2</sup> /s (15 to 250 cSt)   |
| Classe di contaminazione max<br>Max contamination index  | ISO 4406:1999 Classe 19/17/14   |
| Temperatura dell'olio - Oil temperature  | -20°C +80°C -4°F +176°F   |
| Temperatura ambiente - Environment temperature   | -20°C +50°C -4°F +122°F   |
| È indispensabile l'utilizzo di un filtro per proteggere la valvola (filtrazione consigliata 15 µm)<br>It is necessary a filter use to protect the valve (advised filtration 15 µm) |   |
| Trafilamento massimo<br>Max leakage  | 0,25 cm <sup>3</sup> /min - 5 gocce/min<br>0,015 in <sup>3</sup> /min - 5 drops/min |



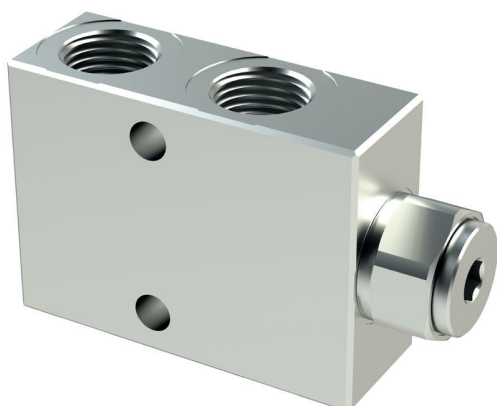
CARATTERISTICHE TECNICHE / TECHNICAL CHARACTERISTICS

| TIPO<br>TYPE | A        | PORTATA MAX (l/min)<br>MAX FLOW (USgpm) | PRESSIONE MAX (bar)<br>MAX PRESSURE (PSI) | L          | C         | PESO APPROX (kg)<br>APPROX WEIGHT (lb) | RAPPORTO DI PILOTAGGIO<br>PILOT RATIO |
|--------------|----------|---|---|------------|-----------|--|---------------------------------------|
| VRPE140      | BSPP 1/4 | 25 (6.6)                                | 350 (5075)                                | 96 (3.78)  | 40 (1.57) | 0,84 (1.85)                            | 1:5.3                                 |
| VRPE380      | BSPP 3/8 | 40 (10.6)                               |   | 109 (4.29) | 45 (1.77) | 1,14 (2.51)                            | 1:4.4                                 |
| VRPE120      | BSPP 1/2 | 60 (15.9)                               |   | 122 (4.80) |           | 1,24 (2.73)                            | 1:4.2                                 |
| VRPE340      | BSPP 3/4 | 100 (26.4)                              | 300 (4350)                                | 132 (5.20) | 55 (2.17) | 1,87 (4.12)                            | 1:4                                   |
| VRPE100      | BSPP 1   | 150 (39.6)                              |   | 166 (6.54) | 65 (2.56) | 3,22 (7.10)                            | 1:4.1                                 |

I dati presenti nel catalogo possono essere soggetti a variazioni, pertanto OLEOWEB si riserva il diritto di apporre modifiche in qualunque momento e senza alcun preavviso. OLEOWEB reserves the right to modify the products at any time and without notice: the technical data of the catalogue can consequently change.

Aggiornamento - Update 21R-2021

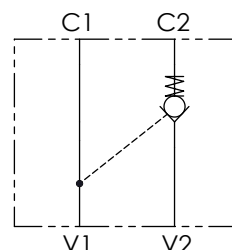
**VRP** VALVOLE DI BLOCCO PILOTATE A SEMPLICE EFFETTO  
SINGLE ACTING PILOT CHECK VALVES



|  |            |    |
|--|------------|----|
| <b>CODICE ORDINAZIONE</b><br>ORDERING CODE | 01         | 02 |
|  | <b>VRP</b> |    |

|           |   |            |
|-----------|---|------------|
| <b>01</b> | VALVOLE DI BLOCCO PILOTATE A SEMPLICE EFFETTO<br>(SINGLE ACTING PILOT CHECK VALVES) | <b>VRP</b> |
| <b>02</b> | DIMENSIONE<br>(SIZE)  | <b>380</b> |
|           |   | <b>120</b> |

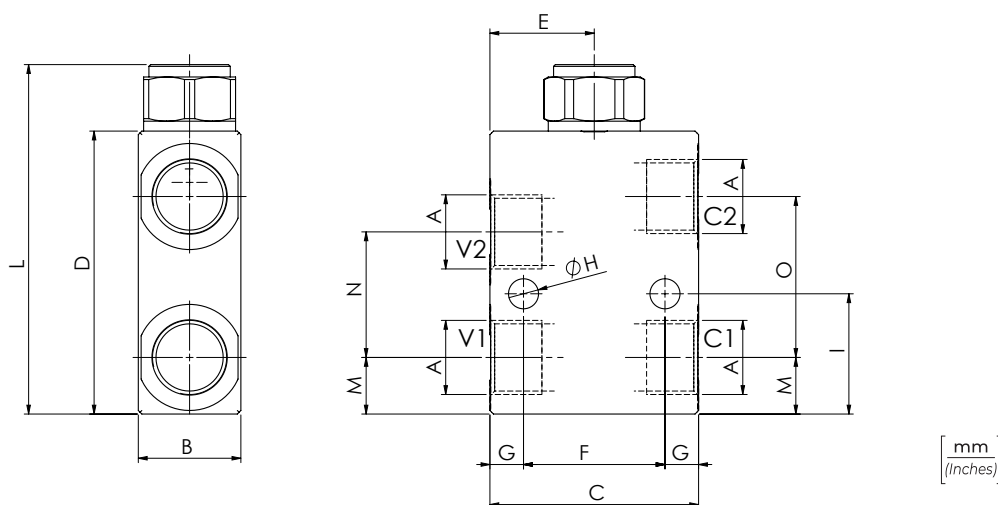
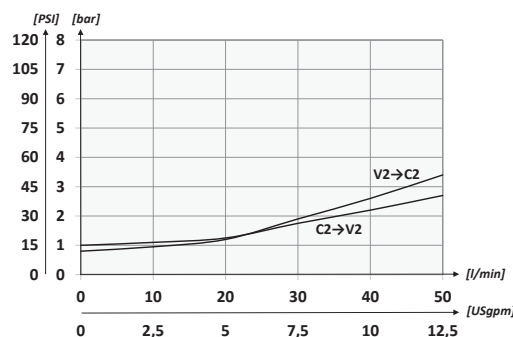
**SCHEMA IDRAULICO / HYDRAULIC CIRCUIT**



**DATI TECNICI / TECHNICAL DATA**

|  |  |
|--|--|
| <b>Olio idraulico</b> - Mineral oil  | <b>ISO 6743/4</b> (DIN 51524)                                    |
| <b>Viscosità olio</b> - Oil viscosity  | <b>15-250 mm²/s</b> (15 to 250 cSt)                              |
| <b>Classe di contaminazione max</b><br>Max contamination index   | <b>ISO 4406:1999 Classe 19/17/14</b>                             |
| <b>Temperatura dell'olio</b> - Oil temperature   | <b>-20°C +80°C</b> -4°F +176°F                                   |
| <b>Temperatura ambiente</b> - Environment temperature  | <b>-20°C +50°C</b> -4°F +122°F                                   |
| È indispensabile l'utilizzo di un filtro per proteggere la valvola (filtrazione consigliata 15 µm)<br>It is necessary a filter use to protect the valve (advised filtration 15 µm) |  |
| <b>Trafilamento massimo</b><br>Max leakage   | <b>0,25 cm³/min - 5 gocce/min</b><br>0,015 in³/min - 5 drops/min |

**PERFORMANCES**



**CARATTERISTICHE TECNICHE / TECHNICAL CHARACTERISTICS**

| TIPO<br>TYPE | A        | PORTATA MAX<br>MAX FLOW<br>l/min-USgpm | PRESSIONE MAX<br>MAX PRESSURE<br>bar-PSI | B  | C               | D              | E            | F    | G            | H   | I               | L  | M            | N               | O            | PESO APPROX<br>APPROX<br>WEIGHT<br>kg-lbt | RAPPORTO<br>DI PILOTAGGIO<br>PILOT RATIO |
|--------------|----------|--|--|----|-----------------|----------------|--------------|------|--------------|-----|-----------------|----|--------------|-----------------|--------------|---|--|
| VRP380       | BSPP 3/8 | 35 (9.2)                               | 350 (5075)                               | 29 | 59              | 80             | 29,5         | 40   | 9,5          | 8,5 | 31,75<br>(1.25) | 99 | 15<br>(0.59) | 33,50<br>(1.32) | 50<br>(1.97) | 0,9 (2)                                   | 1:4                                      |
| VRP120       | BSPP 1/2 | 50 (13.2)                              |  | 16 | 35,50<br>(1.40) | 45,5<br>(1.79) | 34<br>(1.34) | 3,70 | 16<br>(0.63) |     |                 |    |              |                 |              |   |  |